

COMFORTABLE *living*

AUTOMATIC DOOR SYSTEMS

आटोमेटिक डोर सिस्टम्स

A Product Brochure

Automatic Door Solutions Convenience For All

Automatic doors are used throughout industrial and commercial environments to enable easy access to a building, offering a wide range of benefits.

One of the main advantages to having an automatic door is the convenience that comes with it. An automatic door allow people to pass through a door easily without the worry of manually opening a heavy door, such that your customers will feel welcomed from the moment they step foot in your premises. This can be highly effective at solving accessibility issues, as disabled ones are able to enter the building easily and no complication.







Record* Standard Sliding Door

The well-proven single-leaf classic sliding doors from Kalco are at the very centre of the product range, and are suitable for almost any application. The perfectly designed doors with their elegant appearance can be expanded according to customer requirements with regard to security, performance and convenience and can be equipped with escape route safety systems.

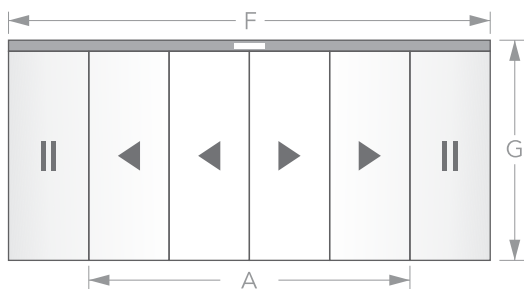


| Model | Door Type | Passage Height "G" | Passage Width "A" | Glass Thickness | Alu - Profile Length "F" |
|-----------|---------------|--------------------|-------------------|-----------------|--------------------------|
| STA21X | Uni-Direction | 2400mm | 1000mm | 10-12mm | 2.1M |
| STA20 C | Uni-Direction | 3000mm | 1200mm | 12mm | 2.5M |
| STA20 DUO | Uni-Direction | 3000mm | 1500mm | 12mm | 3.1M |
| STA21X | Bi-Direction | 2400mm | 2000mm | 10-12mm | 4.2M |
| STA20 C | Bi-Direction | 3000mm | 2400mm | 12mm | 5.0M |
| STA20 DUO | Bi-Direction | 3000mm | 3000mm | 12mm | 6.2M |



Record* Telescopic Sliding Door

Just as inviting and reliable as the traditional sliding doors, but more impressive in construction and operation are our two or four leaf telescopic sliding doors. In comparison with the traditional sliding door, they take up about 30% less space thanks to their narrower leaves, and can cover especially large opening widths of up to 4000mm.



| Model | Door Type | Passage Height "G" | Passage Width "A" | Glass Thickness | Alu - Profile Length "F" |
|-----------|---------------|--------------------|-------------------|-----------------|--------------------------|
| TSA21X | Uni-Direction | 2400mm | 1350mm | 10-12mm | 2.1M |
| TSA20 C | Uni-Direction | 3000mm | 1600mm | 12mm | 2.5M |
| TSA20 DUO | Uni-Direction | 3000mm | 2000mm | 12mm | 3.1M |
| TSA21X | Bi-Direction | 2400mm | 2600mm | 10-12mm | 4.2M |
| TSA20 C | Bi-Direction | 3000mm | 3200mm | 12mm | 5.0M |
| TSA20 DUO | Bi-Direction | 3000mm | 4000mm | 12mm | 6.2M |



Record* Swing Door

This is a universal drive system for the automation of swing doors. It is characterized by sophisticated technology, compact design and especially smoothness of operation. The focus on a broad range of applications makes it a full-fledged swing door suitable for widely differing requirements retail outlets, airports, administration and office buildings, restaurants and hotels.



Model Range



FULL POWER: This is the powerhouse in the family of record swing door operators. It's versatility means it is perfect for providing automatic opening in a wide range of environments, from busy shopping malls to quieter offices and gentler spaces.



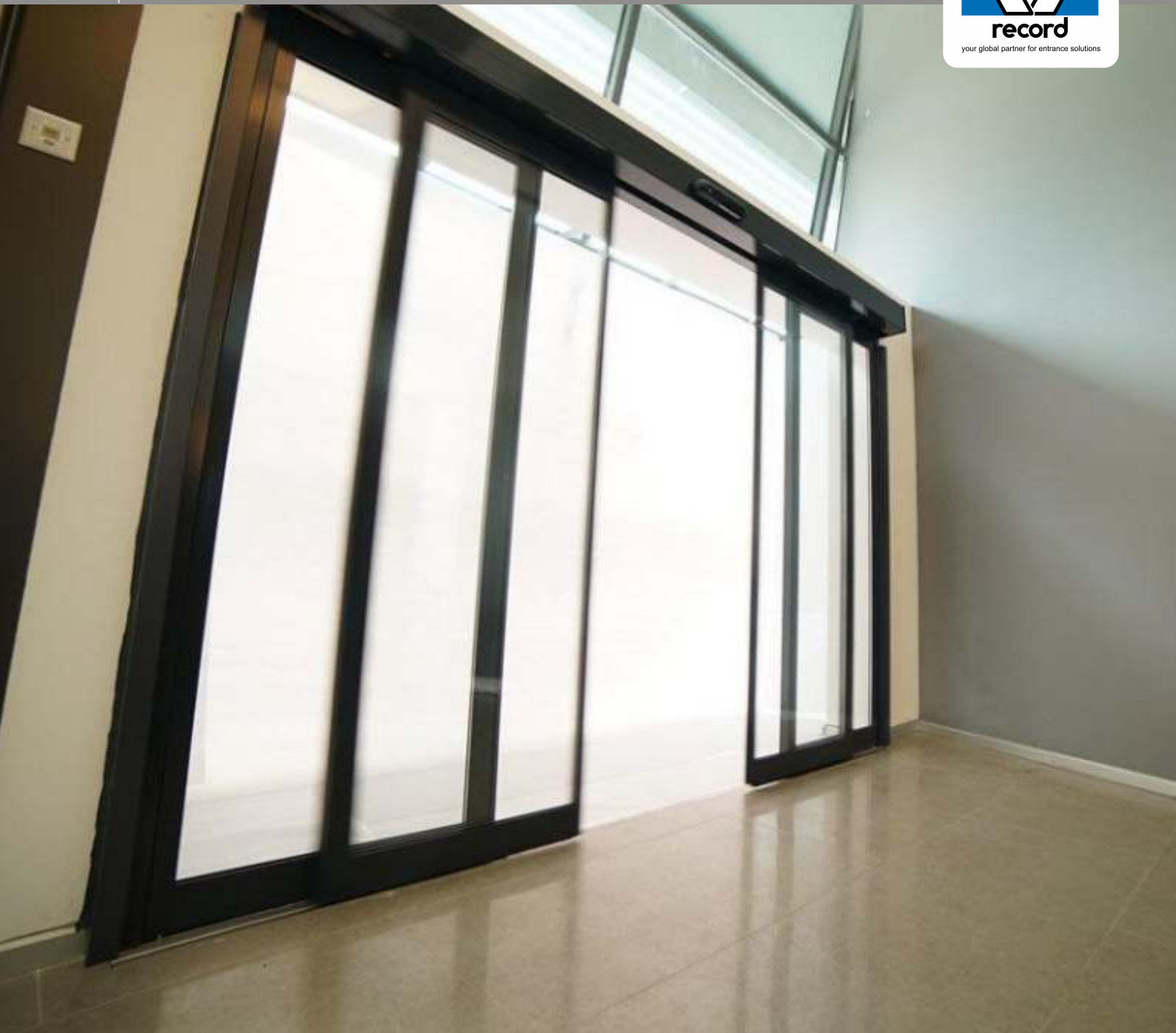
LOW ENERGY: This is the ideal drive for environments where people move only slowly and have limited reaction capacity, such as hospitals and nursing homes. The safety of people in the swing area is not compromised. This door is the ideal choice where safe opening or access assistance is required.



INVERSE: This system enables doors to open securely and reliably, even without a power supply. During the motor-driven closing cycle, the energy required for opening is mechanically stored using a spring. This system opens reliably, even during power failures using the independent smoke and heat venting system.

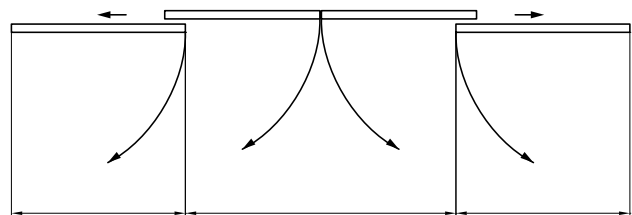
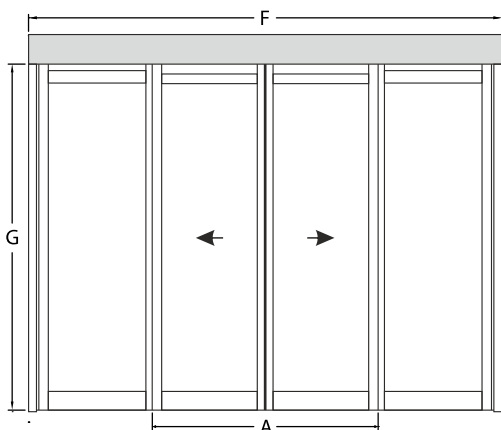


FIRE: This system is approved for use as a smoke and fire protection door. In case of fire, a signal from the smoke and heat detector or fire alarm system immediately triggers the safe closing of the passage. Closing takes place by spring force. Mechanical sequential control also enables double leaf fire doors to be used.



Record* Total Opening System

The TOS total opening system is a linear sliding door, featuring the ability of door leaves and side to be pivoted through 90°, irrespective of the position of the door. The pivoting leaves can be moved towards the wall to reach the total open position, allowing almost the entire width and height of the passageway to be used making it ideal for emergency situations or loading bulky items.



| Model | Passage Height "G" | Passage Width "A" | Max. Width "F" | Door Leaf Weight |
|-------|-----------------------|----------------------|-------------------|---------------------|
| D-TOS | 2500mm | 800-2500mm | 2A+300mm | 2x100 kg |



Record* Folding Door

If there is only limited space for door leaves to open in the passage area, an automatic folding door provides a good solution. The width of passage can be almost fully retained. Automatic folding doors can be retrofitted relatively easily; they are designed to work particularly well when fitted in corridors. Depending on the total width available, the folding door is built as one- or two-sided.

FTA 20

Automatic folding doors can be adapted to suit many passage situations and width of passage can be almost fully retained. These automatic folding doors can be retrofitted relatively easily and designed to work particularly well when fitted in corridors. Depending on the total width available, it is built as one or two-sided. Typical applications can be found in restaurant and commercial kitchen settings.

| Model | Passage Height "G" | Passage Width "A" | Max. Width "F" | Door Leaf Weight |
|-------------|--------------------|-------------------|----------------|------------------|
| FTA20 / FBO | 2500mm | 800-2000mm | 2000mm | 4 x 37.5 kg |



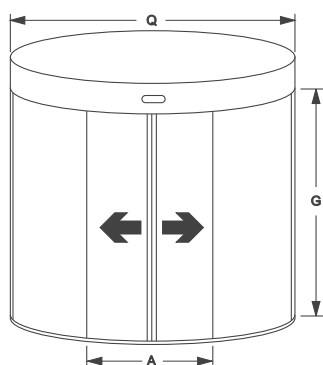
FTA 20 FBO

This folding door was specially developed with a special feature of break-out function where narrower corridors also serve as emergency escape routes. In normal use, the door panels fold inwards. In emergencies, access to escape routes is provided by light pressure on the door panel. This frees the track from its mountings, allowing the door panels to open outwards in an emergency.



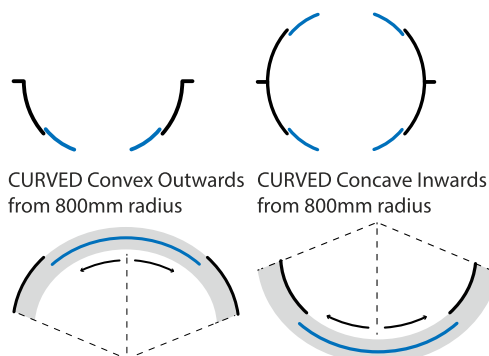
Record* Radial Door

Radial sliding doors are ideally suited to lending any façade a real touch of style. They provide the unsurpassed elegance of a revolving door, but are less complex and far more flexible with regard to looks. This type of door can be integrated into virtually any curved space, and can be inwards or outwards. There are no restrictions of the radius of the curve. Doors can also be curved inwards and outwards.

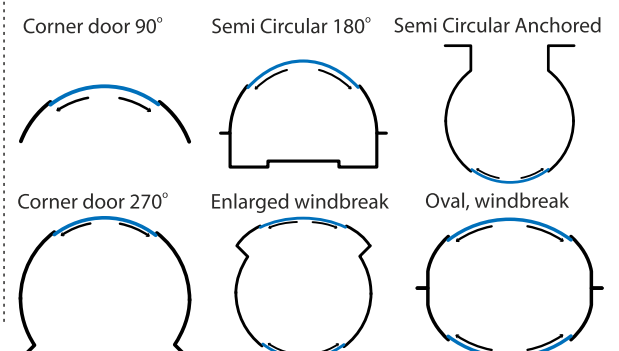


Basic shapes and Special Versions

CURVED Standard 180° / 360° (800 - 1800mm radius)



CURVED Special 180° / 360° (800 - 3000mm radius)





Record* Revolving Door

Revolving doors are the first choice when it comes to counteracting drafts, noise, dust, and temperature fluctuations. Revolving doors are particularly effective at preventing drafts, and other door systems, such as two consecutive sliding doors, are unable to equal this. Revolving doors can greatly reduce heat loss, minimising the heating and air conditioning required, in some cases dramatically.



| Model | Min Dia* | Max Dia* Height | Max Passage | Operation |
|-----------|----------|--------------------|-------------|--|
| K41 & K31 | 2000mm | 3000mm | 2800mm | Manual with Auto-Close Positioning |
| K41 & K31 | 2000mm | 3800mm | 2800mm | Automatic |
| K21 | 3600mm | 6500mm | 2800mm | Automatic |



INNOVATION
AT ITS BEST

SINCE
1992



Linear Sliding | Linear Telescopic | Swing Door Operators | Revolving Doors
Clean Room & Hermetic Doors | Security Doors | Underfloor Drives

www.kalcoindia.com



© Karshni Aluminium Co. Pvt. Ltd.

