



# Aluminium Slimline Door Systems

एल्युमीनियम स्लिमलाइन डोर सिस्टम्स

A Product Brochure



# SKY VIEW 32 Non-Thermal

## Slim Line Doors System



This system is created to obtain all type of windows and doors as well composite models for commercial and residential uses. The system is composed of various design solutions including the concealed sash version. The system is designed in order to ensure good performances and have at the same time a modern style. The profiles are assembled using opposite die casted corners with buttons or /and by pinning or /and by chamfering. The external lines are lightly rounded conferring to the profiles a good design and equilibrate sections.

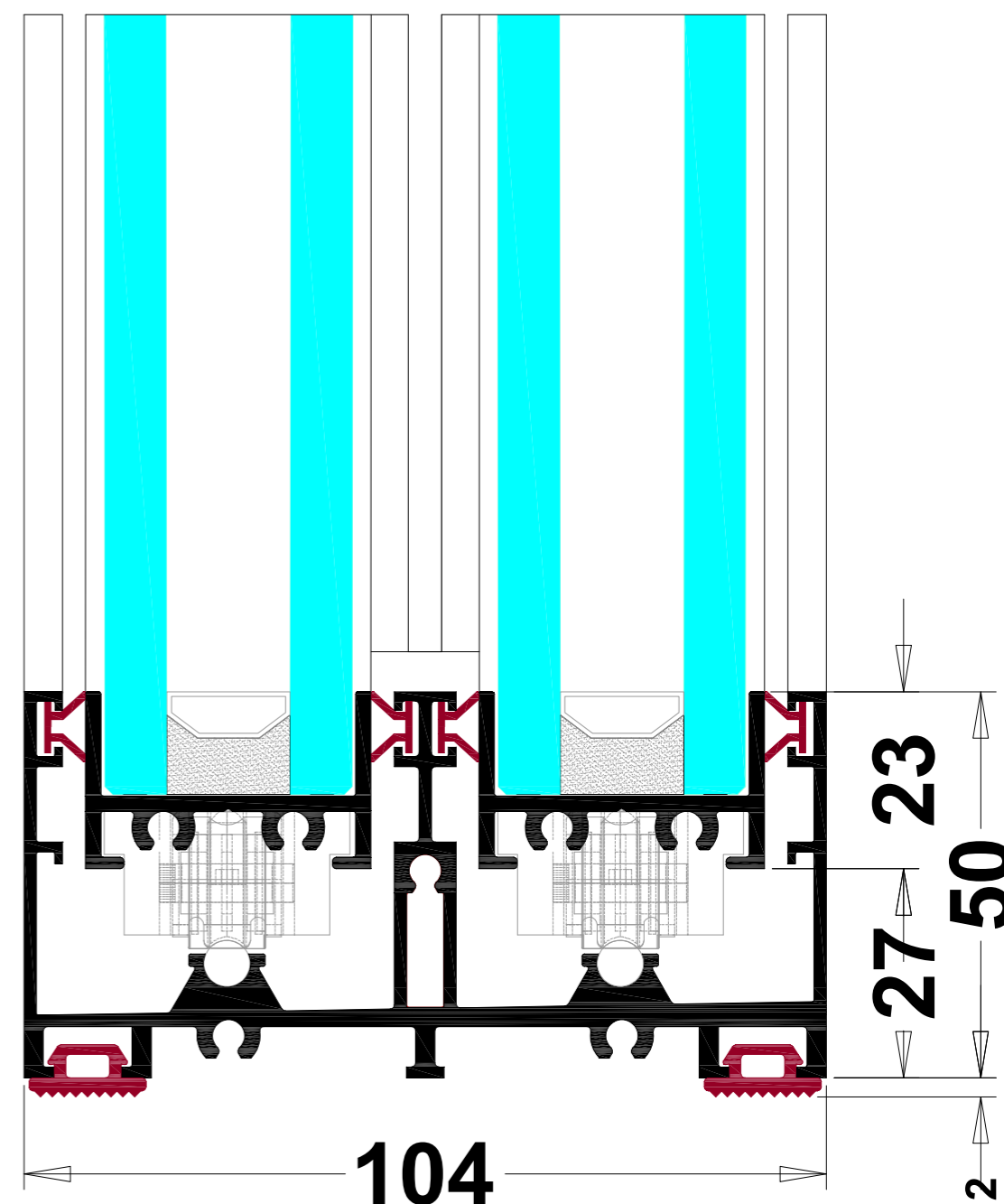
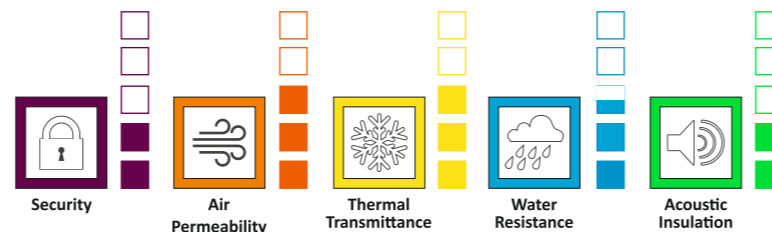
### Basic characteristics:

- Profiles overlap: The Sliding frame is completely hidden by the fix frame.
- External lines are rounded giving profiles a good design.

### Technical Characteristics:

- Sash width 37 mm
- Min frame width 104 mm
- Glass thickness 12mm / 32 mm
- Aluminium Alloy EN-AW-6063

### System Properties







# SKY VIEW 32 Thermal

## Slim Line Doors System



This system is created to obtain all type of windows and doors as well composite models for commercial and residential uses. The system is composed of various design solutions including the concealed sash version. The system is designed in order to ensure good performances and have at the same time a modern style. The profiles are assembled using opposite die casted corners with buttons or /and by pinning or /and by chamfering. The external lines are lightly rounded conferring to the profiles a good design and equilibrate sections.

### Basic characteristics:

- Use of special reinforced polyamides 28 mm.
- Profiles overlap: The Sliding frame is completely hidden by the fix frame.
- External lines are rounded giving profiles a good design.

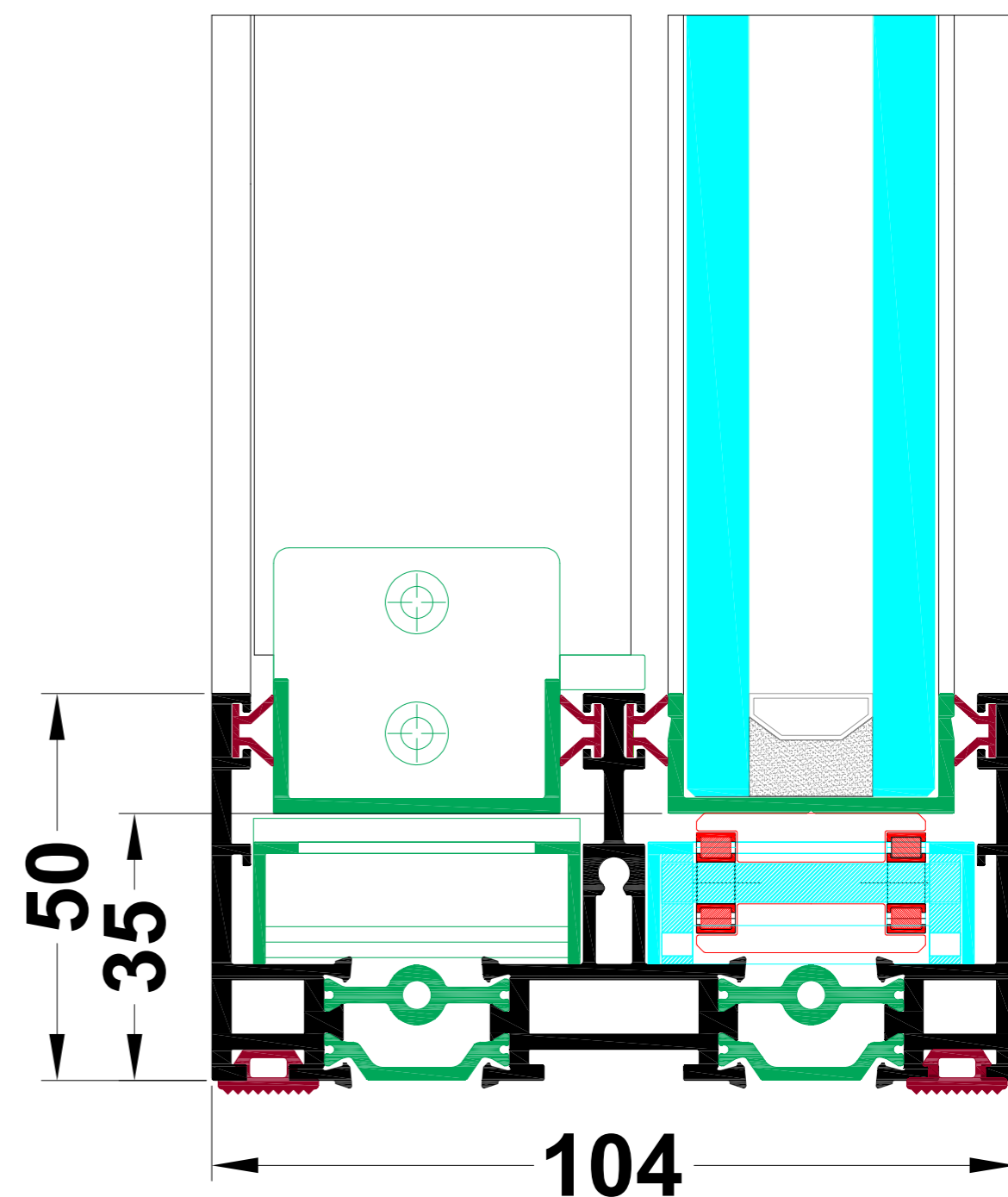
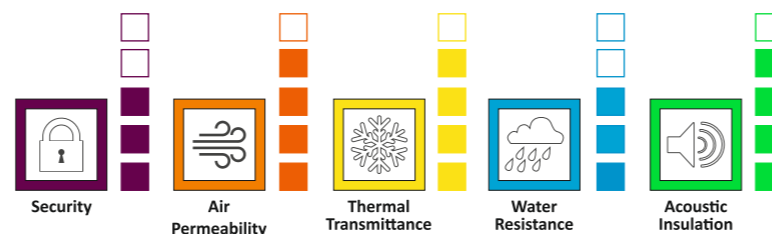
### Technical Characteristics:

- Sash width 37 mm
- Min frame width 104 mm
- Glass thickness 32 mm
- Aluminium Alloy EN-AW-6063

### Performances:

- Thermal Insulation EN ISO 10077-2  $U_f=1.8-1.9 \text{ W}/(\text{m}^2\text{k})$

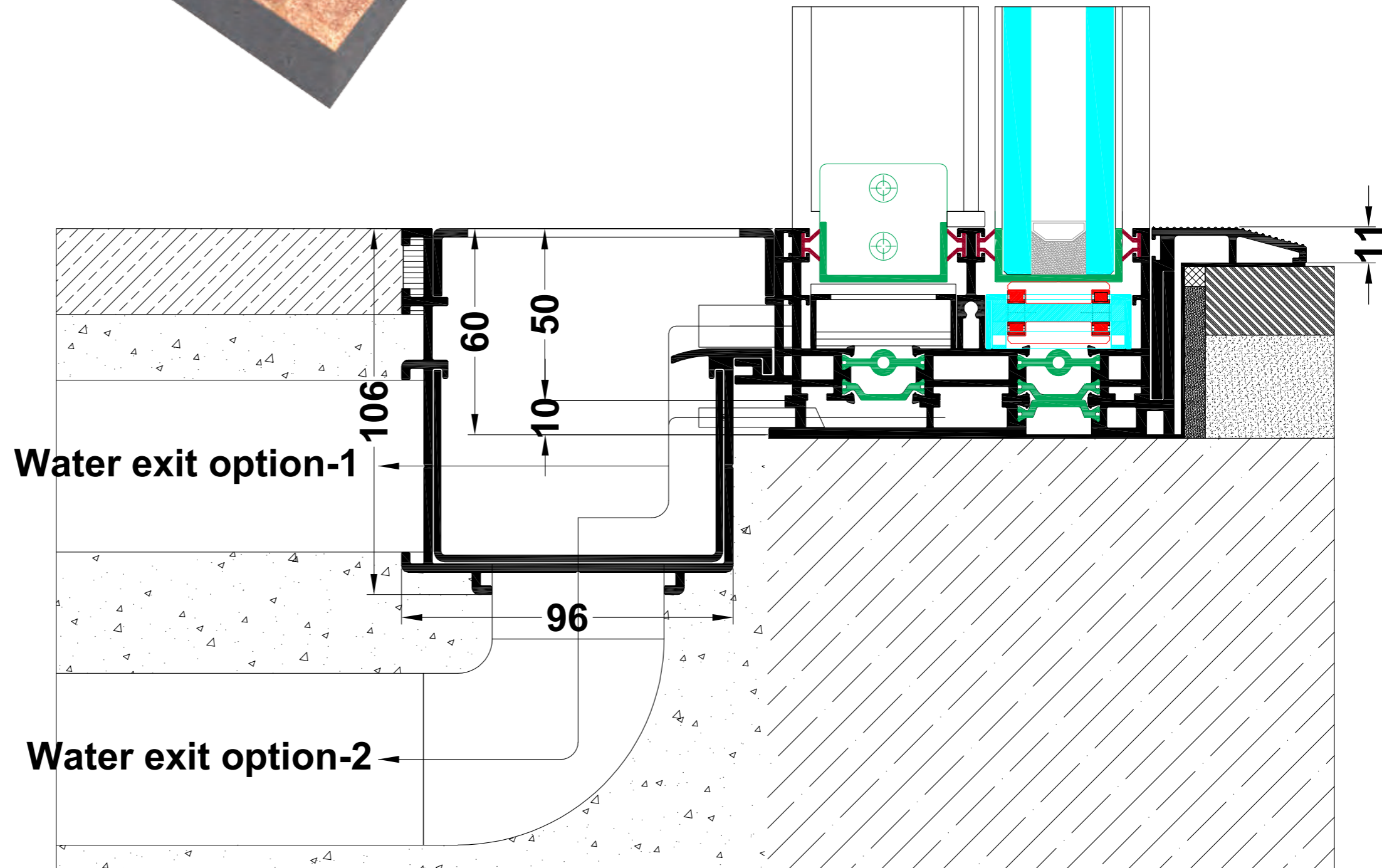
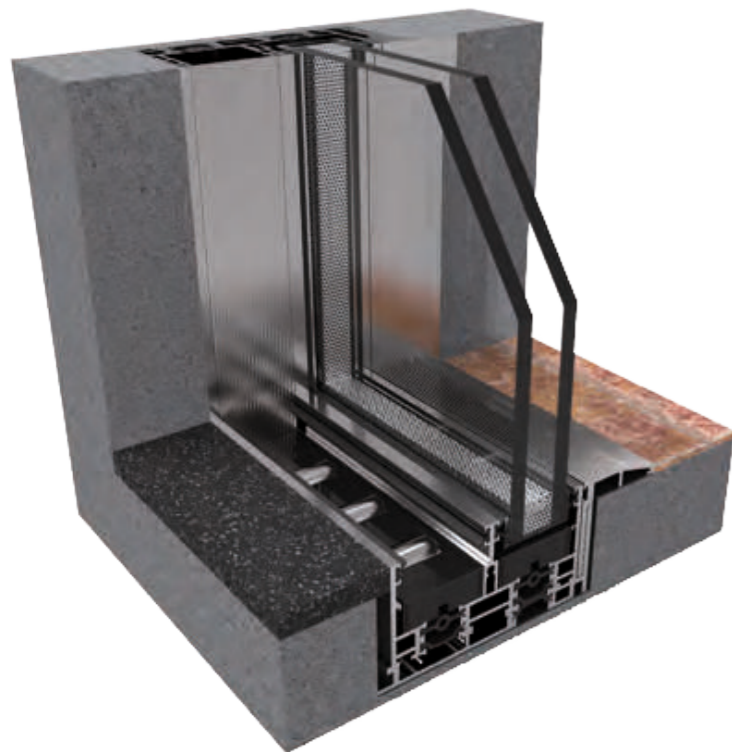
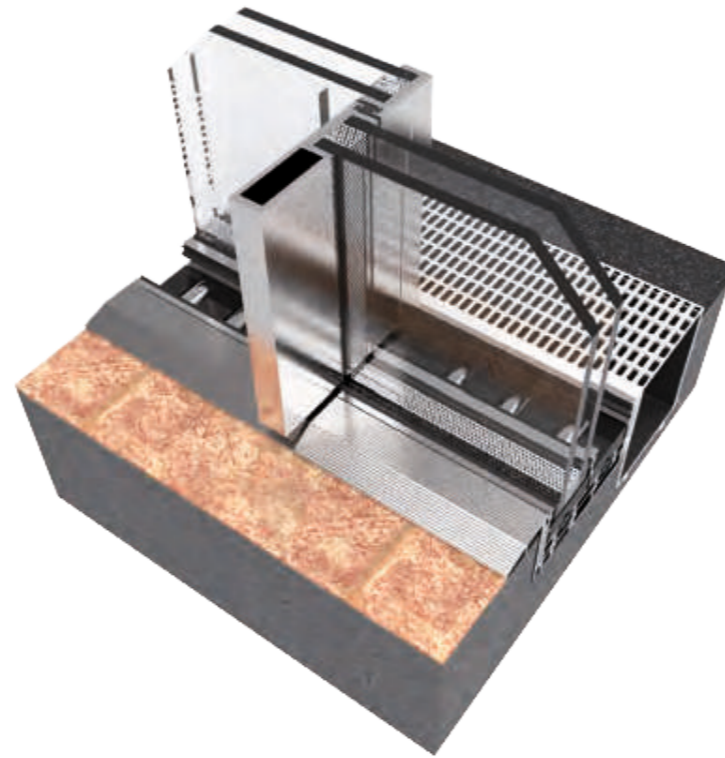
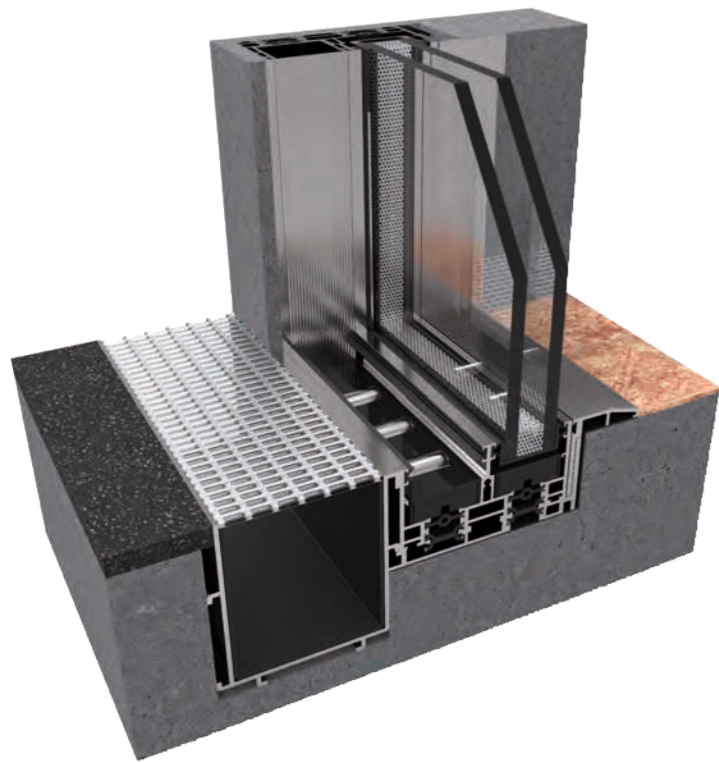
### System Properties





# SKY VIEW 32 Thermal

with Concealed Drainage System





INNOVATION  
AT ITS BEST

SINCE  
1992

हमें भारत का ब्रांड बनाने के लिए धन्यवाद।  
*Thank you for making us Brand of India.*



DOORS • WINDOWS • FACADES • BIPV • LADDERS

[www.kalcoindia.com](http://www.kalcoindia.com)

TOLLFREE NUMBER  
**1800 1212 126**

© Kalco Alu-Systems Private Limited

alu<sup>is</sup> **ecometa**